

# INSTALLATION MANUAL

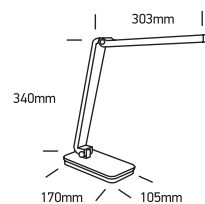
61072

**ecolight**

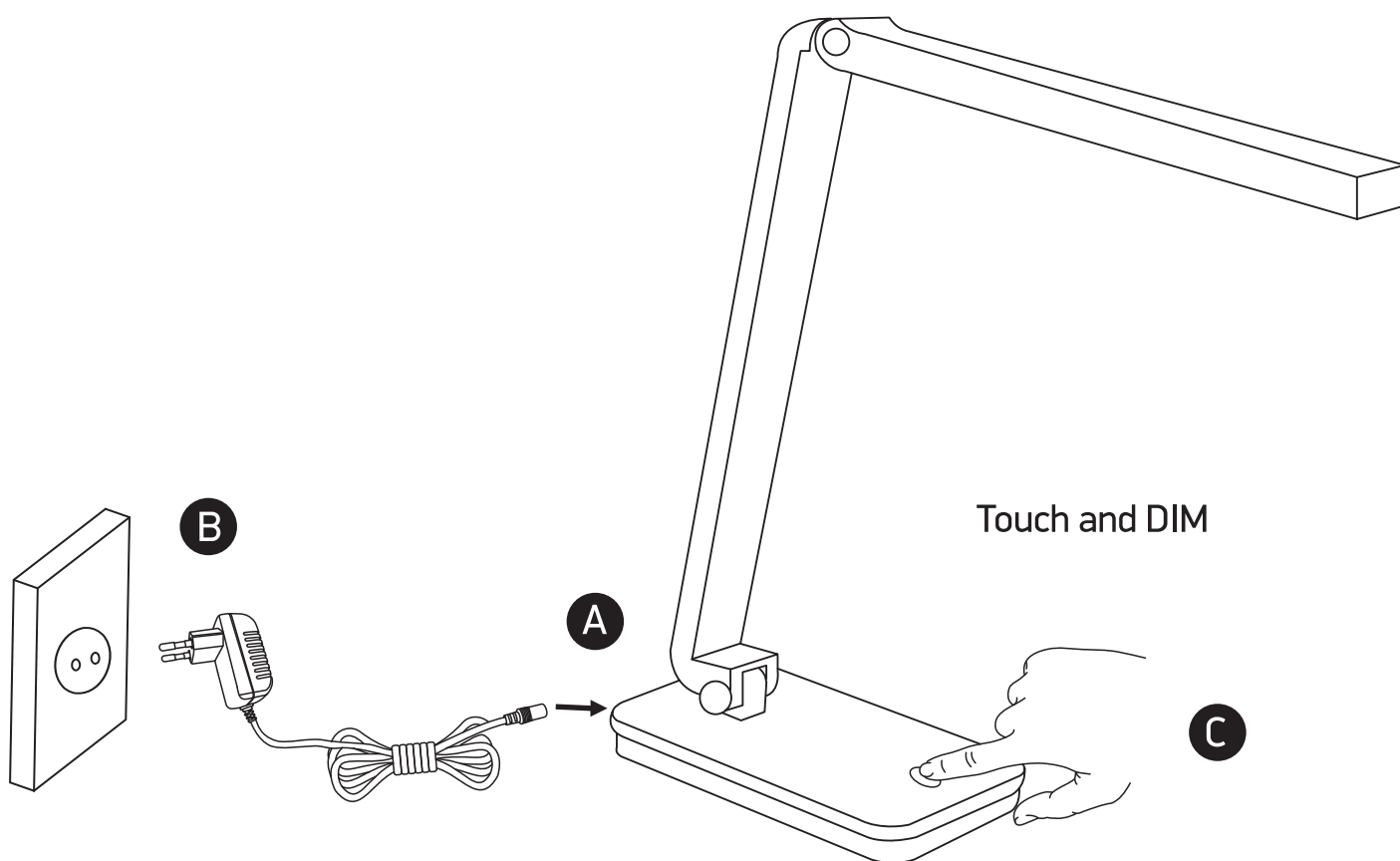


100-240V | SMD 2835 | 6W | IP20 | ABS | Adjustable

USB charging socket



**one**  
LIGHT



## Warnings:

1. Make sure that the product is installed properly before connecting to electricity.
2. Do not cover the fitting.
3. Maintenance and installation should only be carried out by a professional electrician.