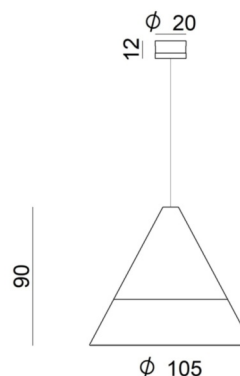




Systems | 1 topLED 6 W DC 350 mA | CRI 80
9495



| Technical data | |
|--|------------------|
| Construction year | 2020 |
| Type | Systems |
| Installation position | Ceiling |
| Installation environment | Indoor |
| Light Source | LED |
| Optics | General Lighting |
| Light emission direction | downward |
| Power | 6 W |
| CCT / Tone | 3000 K |
| Source lumens | 900 lm |
| Current intensity | 350mA |
| Frequency | 50-60 Hz |
| CCT / Tone | 3000 K |
| Colour rendering index | 80 Ra |
| C.C. / C.V. | CC |
| Safety class | 3 |
| IP | IP40 |
| Glow wire test | 650° |
| Direct mounting on normally flammable surfaces | Yes |
| CE | Yes |
| Driver included | No |
| Dimmable article | No |
| Directional | No |
| Tilting | No |
| Walk-over | No |
| Drive-over | No |
| Cable included | Yes |
| Cable length | 5 m |
| Resin potting | No |
| Type of light emission | Single emission |
| Net weight | 0.460 Kg |
| Electrostatic discharge protection | No |
| Surge protection | No |

| Finishing casing | |
|----------------------------------|-------------------------|
| Material | Aluminium |
| Colour | embossed white RAL 9003 |
| Processing | Coating |
| Finishing diffuser | |
| Material | PMMA |
| Colour | transparent |
| Cables Electrification+susension | |
| Max cable length | 5000 mm |



Systems | 1 topLED 6 W DC 350 mA | CRI 80 | Color temperature : 3000 K
9495

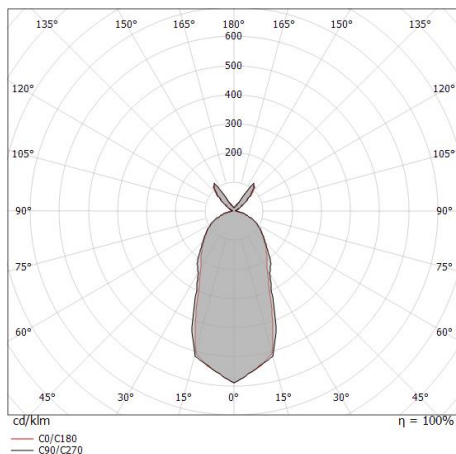
Single emission systems for indoor application. The warm white LED light source with a general lighting light distribution is composed of 1 topped LEDs with CCT of 3000 K and a CRI 80; the source luminous flux is 900 lm, with a 150.0 lm/W nominal luminous efficacy.

The device body is made of aluminium and features a embossed white ral 9003 finish, processed by means of coating; the diffuser is made of pmma. The ingress protection degree is IP40; the total weight is of 0.460 kg. The power supply driver is not provided and is to be ordered separately.

The total absorbed power is 6 W. The power supply cable is included and features a 5 m lenght.

The device features protection class III and can be ceiling-mounted.

Compliant with the EN 60598-1 standard and its specific provisions.



| Distance [m] | Cone diameter [m] | E(0°) | E(C90) | E(C0) | Illuminance [lx] |
|--------------|-------------------|-------|--------------|--------------|------------------|
| 0.5 | 0.47 0.45 | 927 | 25.4° 342 | 24.3° 351 | |
| 1.0 | 0.95 0.90 | 232 | 25.4° 85 | 24.3° 88 | |
| 1.5 | 1.42 1.35 | 103 | 25.4° 38 | 24.3° 39 | |
| 2.0 | 1.90 1.81 | 58 | 25.4° 21 | 24.3° 22 | |
| 2.5 | 2.37 2.26 | 37 | 25.4° 14 | 24.3° 14 | |
| 3.0 | 2.85 2.71 | 26 | 25.4° 9 | 24.3° 10 | |

Distance [m] Cone diameter [m] Illuminance [lx]

— C0/C180 (Half-peak divergence: 48.6°)
 — C90/C270 (Half-peak divergence: 50.8°)

Illuminotechnical Features

| | |
|---|----------------|
| Light Output Ratio (LOR) | 43 % |
| Source lumens | 900 lm |
| Delivered lumens | 392.82 lm |
| Consumption | 6 W |
| Luminaire efficacy | 65 lm/W |
| Colour temperature | 3000 K |
| Standard Deviation of Colour Matching | 3 Step MacAdam |
| Colour rendering index | 80 Ra |
| Junction temperature (lighting fixture) | 80 |
| Standard Operating Ambient Temperature | 25 |

LED Life / Failure Ratio

L70 B20 C0 72.5h

UGR

| | |
|-------------------|----------|
| UGR axial | < 28 |
| UGR transversal | < 25 |
| X=4H Y=8H | S=0.25H |
| Reflection factor | 70/50/20 |

OPTICAL

| | |
|-----------------------------|-------------|
| Light distribution simmetry | Symmetrical |
| C0/C180 optics | 49° |



| | | | |
|--|--|--|--|
| | | <p>Cable cover Material:Aluminium, colour:embossed white RAL 9003, processing:Coating.</p> | <p>Code <u>KIT0090</u></p> |
| | | <p>Cable cover Material:Aluminium, colour:embossed white RAL 9003, processing:Coating.</p> | <p>Code <u>KIT0100</u></p> |
| | | <p>Cable cover Material:Aluminium, colour:black RAL 9005, processing:Coating.</p> | <p>Code <u>KIT0091</u></p> |
| | | <p>Cable cover Material:Aluminium, colour:chrome, processing:Electroplating.</p> | <p>Code <u>KIT0092</u></p> |
| | | <p>Cable cover Material:Aluminium, colour:gold, processing:Electroplating.</p> | <p>Code <u>KIT0094</u></p> |
| | | <p>Cable cover Material:Aluminium, colour:black RAL 9005, processing:Coating.</p> | <p>Code <u>KIT0101</u></p> |
| | | <p>Cable cover Material:Aluminium, colour:chrome, processing:Electroplating.</p> | <p>Code <u>KIT0102</u></p> |
| | | <p>Cable cover Material:Aluminium, colour:gold, processing:Electroplating.</p> | <p>Code <u>KIT0104</u></p> |



Sinfonia Sys. - Verdi | Systems | Accessories
9495



Cable cover
Material:PC, colour:black.

Code
KIT0110



Cable
Length 10000 mm; insulation single/double with shielding.

Code
KIT0106