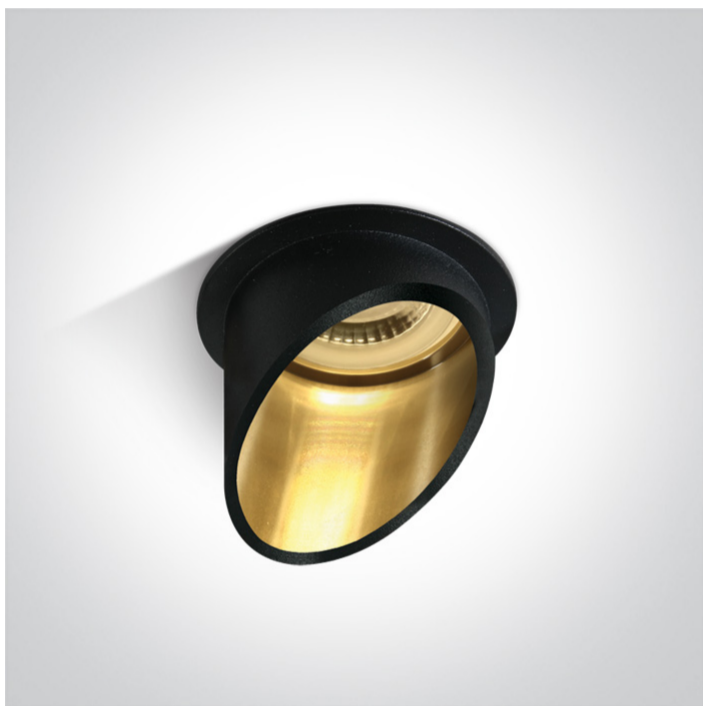


New 2020 Edition 2>Recessed Spots Fixed

10105E1/B/GL



Recessed MR16 spot with GU10 lampholder.

Complies with standard EN60598-1 and any other specific standards.



Downloads



Dimensions



Physical Specification

Item Group	New 2020 Edition 2
Family	Recessed Spots Fixed
Order Code	10105E1/B/GL
Colour	Black-Gold
Material	Aluminium
Shape	Circular
Height	65mm
Diameter	68mm
Cutout Hole Diameter	62mm
Recessed Ceiling	Yes
Depth Required	100mm
Indoor	Yes

Adjustable

No

Electrical Characteristics

Gear

No

Fitting + Driver

Input Voltage

100-240V

50 Hz

Yes

60 Hz

Yes

Safety Class



Power(Watts)

50W

IP Rating

IP20

Light Source

Replaceable lamp

Lamp Holder

GU10

Number of Lamps

1

Dimmable

N/A

Cable Length

15cm

F Mark



Illumination Data

Illumination Diagram



Dark Light

Yes

Packing Info

Pcs/Carton

50

Barcode

5291889065579

HS Code

9405409900

Energy Label



Certification & Warranty

Warranty

5 Years

Weee Directive

Yes

switch to
one light!

one
LIGHT

