

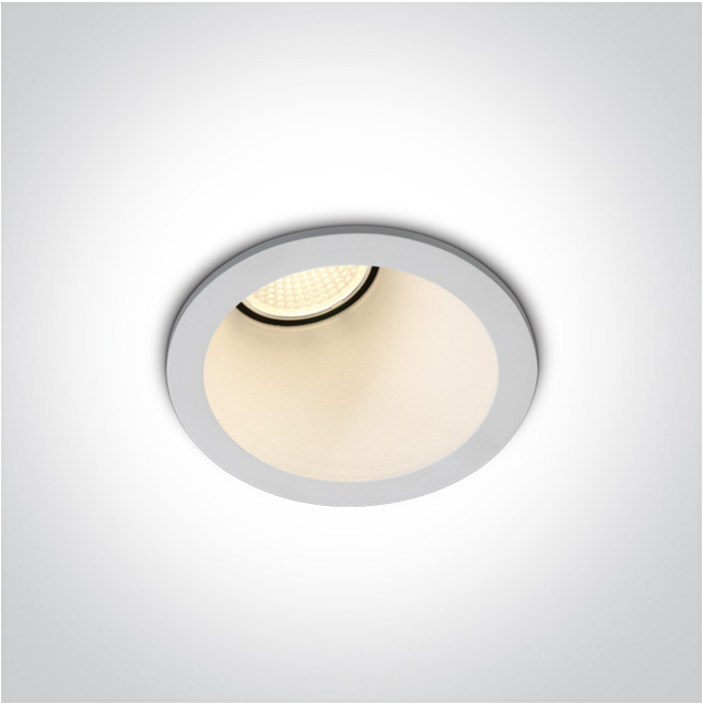


# Product Datasheet

www.1-light.eu

New 2020 Edition 2>Recessed Spots Fixed LED

10108A/W/W



8W COB LED Recessed Assymetric Spot.

Supplied with non-dimmable LED driver.

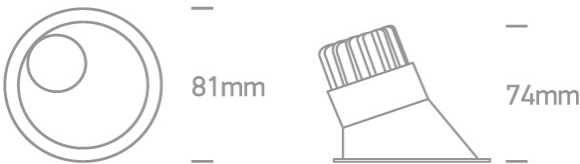
Complies with standard EN60598-1 and any other specific standards.



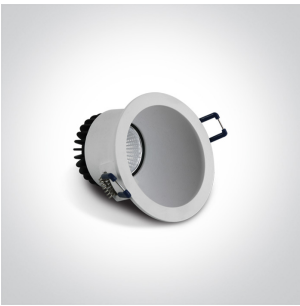
## Downloads



## Dimensions



## Gallery





## Physical Specification


Item Group	New 2020 Edition 2
Family	Recessed Spots Fixed LED
Order Code	10108A/W/W
Colour	White
Material	Die Cast
Shape	Circular
Height	74mm



Diameter	81mm
Cutout Hole Diameter	68mm
Recessed Ceiling	Yes
Depth Required	85mm
Indoor	Yes
Adjustable	No

Electrical Characteristics

Gear	External-Included
Fitting + Driver	
Input Voltage	220-240V
50 Hz	Yes
60 Hz	Yes
Safety Class	
Power(Watts)	8W
IP Rating	IP20
Light Source	LED built in
Dimmable	No
F Mark	

Fitting	
Input Type	Constant Current
Input Current	350mA
Voltage	20V
Safety Class	
Power(Watts)	7W
IP Rating	IP20
Light Source	LED built in
LED Type	COB
LED Brand	Cree

F Mark



Gear

Gear Type

Led Driver

Input Voltage

220-240V

50 Hz

Yes

60 Hz

Yes

Power(Watts)

5-8,4W

Power Factor

0,9

Constant Current

Yes

350mA

14-24V

IP Rating

IP20

Safety Class



Dimmable

No

Housing Material

Plastic

Output Terminal

Cable

Brand

Lifud

Protection

Short Circuit and Overload

Illumination Data

Colour Temperature

3000K

Lumen Output

560lm

Light Efficiency

70lm/W

CRI

80

Beam Angle

50°

Illumination Diagram



Dark Light

Yes

Packing Info

Pcs/Carton

50

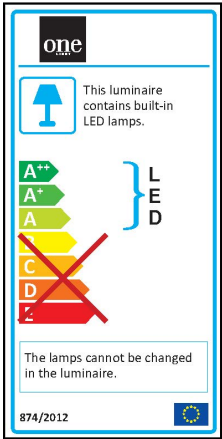
Barcode

52918890463322

HS Code

9405409900

Energy Label



Certification & Warranty

Warranty

3 Years

Weee Directive

Yes

switch to  
one light!

