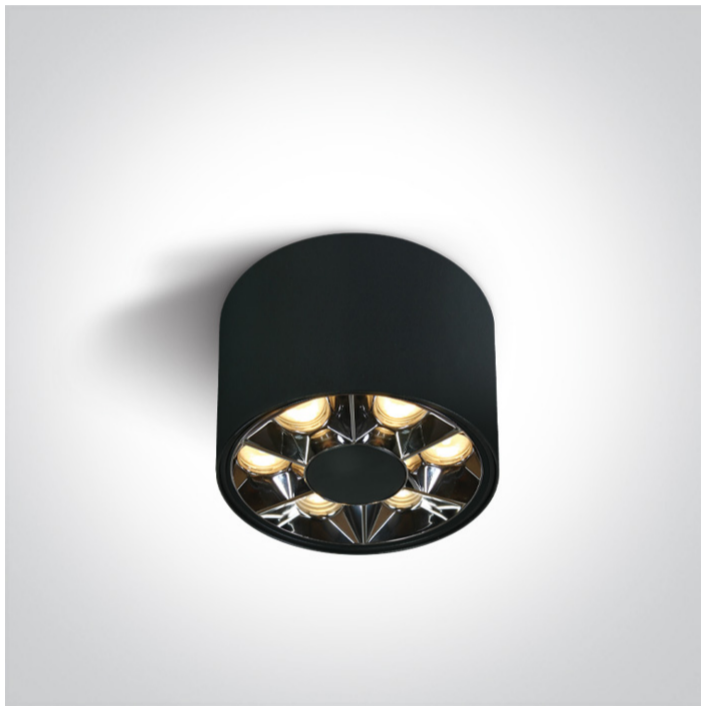


New 2022 Edition 3>Wall and Ceiling LED

## 12106X/B/W



6W Ceiling spot, IP20.

Complete with 150mA driver.

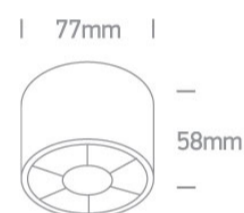
Complies with standard EN60598-1 and any other specific standards.



### Downloads






### Dimensions




### Physical Specification

Item Group	New 2022 Edition 3
Family	Wall and Ceiling LED
Order Code	12106X/B/W
Colour	Black
Material	Aluminium
Shape	Circular
Height	58mm
Diameter	77mm
Surface Ceiling	Yes
Indoor	Yes
Adjustable	No


Gear		Built In	
Fitting + Driver			
Input Voltage		220-240V	
50 Hz		Yes	
60 Hz		Yes	
Safety Class			
Power(Watts)		6W	
IP Rating		IP20	
Light Source		LED built in	
Dimmable		No	

Fitting			
Input Type		Constant Current	
Input Current		150mA	
Voltage		36V	
Safety Class			
Power(Watts)		5,4W	
IP Rating		IP20	
Light Source		LED built in	
LED Type		SMD 3030	
LED Brand		Sanan	
LED Number		6	
F Mark			

Gear			
Gear Type		Led Driver	
Input Voltage		220-240V	
50 Hz		Yes	
60 Hz		Yes	

Power(Watts)	4,2-6,3W
Power Factor	0,5
Constant Current	Yes
150mA	28-42V
IP Rating	IP20
Safety Class	
Dimmable	No
Ambient Temp	-20°C...+60°C
Operating Temp	85°C
Brand	Eaglerise
Protection	Over Load Protection, Over Voltage Protection, Short circuit Protection

#### Illumination Data

Colour Temperature	3000K
Lumen Output	480lm
Light Efficiency	80lm/W
CRI	90
Beam Angle	38°
Illumination Diagram	
Dark Light	Yes

#### Packing Info

Pcs/Carton	40
Barcode	5291889074441
HS Code	9405413990

#### Certification & Warranty

switch to  
**one light!**

one  
LIGHT

