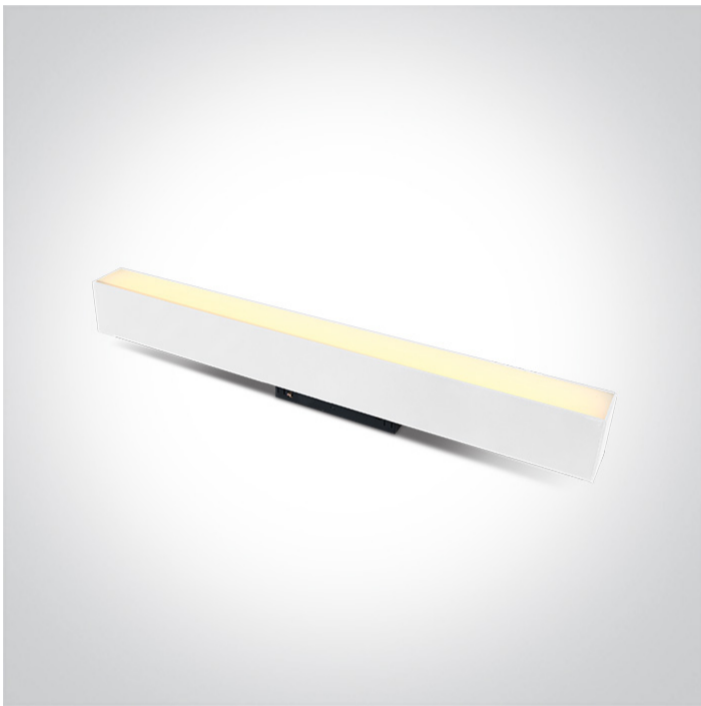


09 Tracks & Magnetic > Magnetic Linear Lights CCT V

42100B/W/V



25W CCT Variable LED Linear light for magnetic profile.

Suitable for MAXI magnetic profiles.

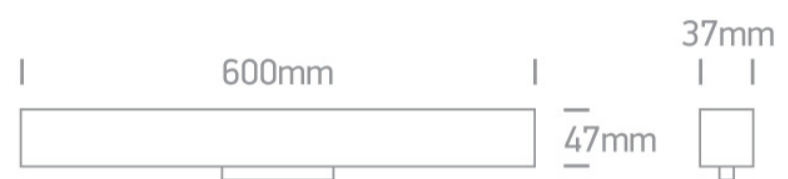
Complies with standard EN60598-1 and any other specific standards.



Downloads



Dimensions





Physical Specification

Item Group	09 Tracks & Magnetic
Family	Magnetic Linear Lights CCT V
Order Code	42100B/W/V
Colour	White
Material	Aluminium
Diffuser Material	PC
Shape	Rectangular
Length	600mm
Width	37mm
Height	47mm
Surface Ceiling	Yes
Surface Wall	Yes

Track mounted	Yes
Indoor	Yes
Adjustable	No

Electrical Characteristics

Fitting

Input Type	Constant Voltage
Input Voltage	48V DC
Safety Class	
Power(Watts)	25W
IP Rating	IP20
Light Source	LED built in
F Mark	

Illumination Data

Colour Temperature	3000K-3500K-4000K
Lumen Output	2000lm
Light Efficiency	80lm/W
CRI	90
Beam Angle	120°
Illumination Diagram	

Packing Info

Box Weight	0.840kg
Pcs/Carton	20
Barcode	5291889086178
HS Code	9405413990

Warranty

3 years

switch to
one light!

one
LIGHT

