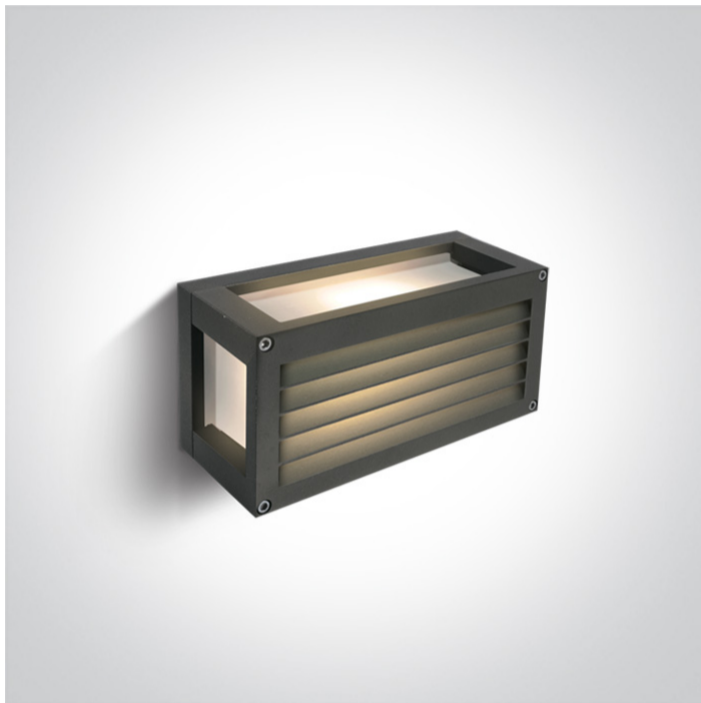


New 2019 Edition 2>Wall & Ceiling LED

67420AL/AN/W



7W SMD LED outdoor wall light ideal for residential illumination, IP54.

Complete with non-dimmable LED driver.

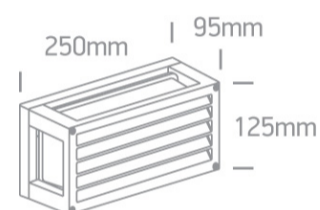
Complies with standard EN60598-1 and any other specific standards.



Downloads



Dimensions





Physical Specification

Product Type	Fitting
Item Group	New 2019 Edition 2
Family	Wall & Ceiling LED
Order Code	67420AL/AN/W
Colour	Anthracite
Material	Die Cast
Diffuser Material	Glass
Diffuser Color	Frosted
Shape	Rectangular
Length	250mm
Width	95mm
Height	125mm

Surface Wall	Yes
Indoor	Yes
Outdoor	Yes

Electrical Characteristics


Gear	Built In
Fitting + Driver	
Input Voltage	220-240V
50 Hz	Yes
60 Hz	Yes
Safety Class	
Power(Watts)	7W
IP Rating	IP54
Light Source	LED built in
Dimmable	No
F Mark	

Fitting	
Input Type	Constant Current
Input Current	350mA
Voltage	18V
Power(Watts)	6,3W
IP Rating	IP54
Light Source	LED built in
LED Type	SMD 2835
LED Brand	Edison
LED Number	40

Gear	
Gear Type	Led Driver

Input Voltage	220-240V
50 Hz	Yes
60 Hz	Yes
Power(Watts)	4,2-6,3W
Power Factor	0,5
Constant Current	Yes
350mA	12-18V
IP Rating	IP20
Safety Class	
Dimmable	No
Housing Material	Plastic
Output Terminal	Cable

Illumination Data

Colour Temperature	3000K
Lumen Output	300lm
Light Efficiency	43lm/W
CRI	80
Illumination Diagram	

Packing Info

Box Length	29,5cm
Box Width	17cm
Box Height	14,5cm
Pcs/Carton	6
Barcode	5291889058175
HS Code	9405409900

Energy Label



Certification & Warranty

Warranty

2 Years

Wee Directive

Yes

switch to
one light!

one
LIGHT

