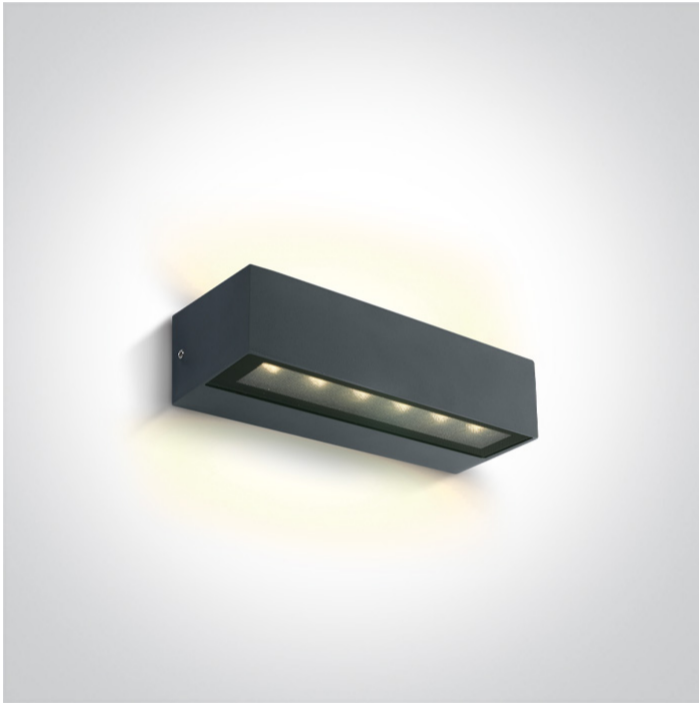


New 2023 Edition 2>Wall & Ceiling LED

## 67526B1/AN/W



2x6W Wall light, IP65.

Complete with 300mA driver.

Complies with standard EN60598-1 and any other specific standards.



### Downloads



### Dimensions



### Physical Specification

Item Group	New 2023 Edition 2
Family	Wall & Ceiling LED
Order Code	67526B1/AN/W
Colour	Anthracite
Material	Die Cast
Shape	Rectangular
Length	222mm
Width	70mm
Height	50mm
Surface Wall	Yes
Indoor	Yes
Outdoor	Yes

Adjustable No

IK Rating 7

## Electrical Characteristics

Gear

Built In

### Fitting + Driver

Input Voltage 220-240V

50 Hz Yes

60 Hz Yes

Safety Class 

Power(Watts) 2x6W

IP Rating IP65

Light Source LED built in

Dimmable No

F Mark 

### Fitting

Input Type Constant Current

Input Current 300mA

Voltage 35,12V

Power(Watts) 10,54W

IP Rating IP65

Light Source LED built in

LED Type SMD 3030


LED Brand Osram

### Gear


Gear Type Led Driver

Input Voltage 220-240V

50 Hz Yes

60 Hz	Yes
Power(Watts)	7,2-12W
Power Factor	0,9
Constant Current	Yes
300mA	24-40V
IP Rating	IP20
Safety Class	
Dimmable	No
Housing Material	Plastic
Brand	Eaglerise
Protection	0

#### Illumination Data

Colour Temperature	3000K
Lumen Output	720lm
Light Efficiency	60lm/W
CRI	80
Illumination Diagram	

#### Packing Info

Pcs/Carton	12
Barcode	5291889075776
HS Code	9405413990

#### Certification & Warranty

switch to  
**one light!**

one  
LIGHT

