

New 2019 Edition 2>Wall Recessed & Inground

68072C/W



10W LED wall recessed light, IP65, ideal for both indoor and outdoor installation.

Complete 350mA driver.

Supplied with box for concrete installation

Complies with standard EN60598-1 and any other specific standards.



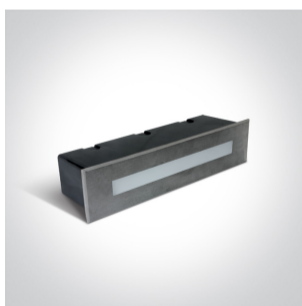
Downloads



Dimensions



Gallery



Physical Specification

Product Type

Item Group

Family

Order Code

Colour

Material

Diffuser Material

Fitting

New 2019 Edition 2

Wall Recessed & Inground

68072C/W



Stainless Steel

Stainless Steel 316



Glass

Diffuser Color	Frosted
Shape	Rectangular
Length	270mm
Width	63mm
Height	67mm
Cutout Hole Width	253mm for Concrete Installation 240mm for Gypsum Installation
Cutout Hole Length	55mm for Concrete 45mm for Gypsum Installation
Recessed wall	Yes
Depth Required	75mm
Indoor	Yes
Outdoor	Yes
IK Rating	8


Electrical Characteristics

Gear	Built In
Fitting + Driver	
Input Voltage	220-240V
50 Hz	Yes
60 Hz	Yes
Safety Class	
Power(Watts)	10W
IP Rating	IP65
Light Source	LED built in
Dimmable	No
F Mark	

Fitting	
Input Type	Constant Current
Input Current	350mA
Voltage	26V

Safety Class	
Power(Watts)	9,1W
IP Rating	IP65
Light Source	LED built in
LED Type	SMD 2835
LED Brand	Edison
F Mark	

Gear

Gear Type	Led Driver
Input Voltage	220-240V
50 Hz	Yes
60 Hz	Yes
Power(Watts)	6-9W
Power Factor	0,5
Constant Current	Yes
350mA	17-26V
IP Rating	IP20
Safety Class	
Housing Material	Plastic

Illumination Data

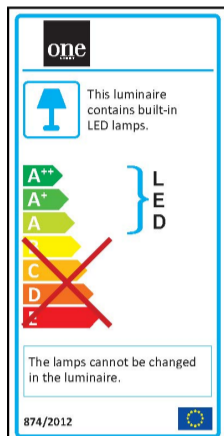
Colour Temperature	3000K
Lumen Output	200lm
Light Efficiency	20lm/W
CRI	80
Illumination Diagram	

Packing Info

Box Length	9cm
------------	-----

Box Width	7,5cm
Box Height	29cm
Pcs/Carton	12
Barcode	5291889057734
HS Code	9405409900

Energy Label



Certification & Warranty

Warranty

2 Years

Wee Directive

Yes

switch to
one light!

one
LIGHT

